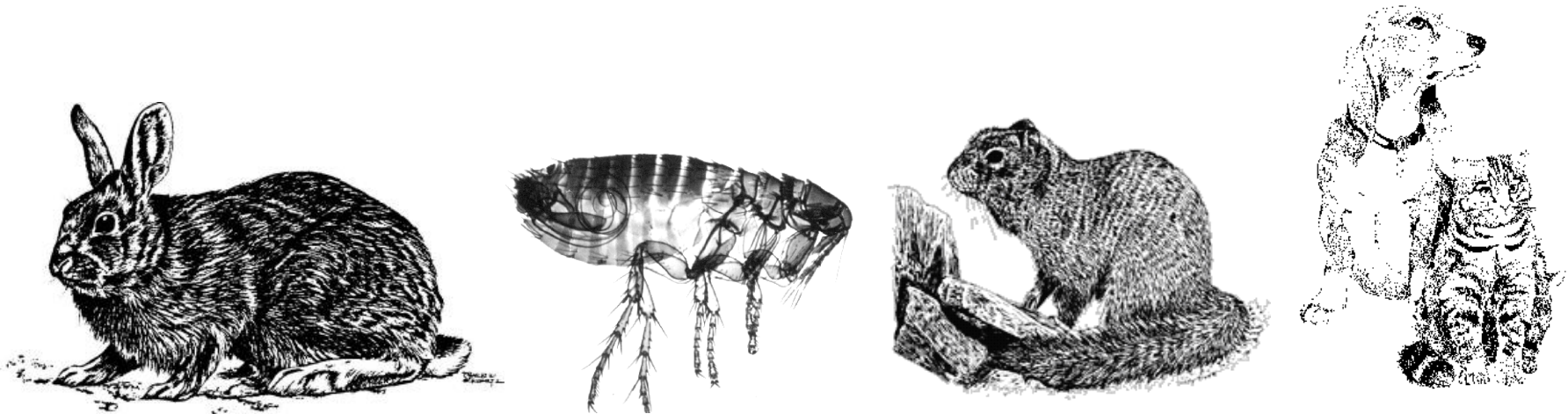


PUBLIC NOTICE: PLAGUE WARNING



Plague may be in this area. Plague can be **fatal** to people and pets unless diagnosed and treated.

Plague is caused by bacteria that can be transmitted by fleas and contact with infected animals, such as rodents, rabbits, and cats.

TO REDUCE YOUR RISK OF GETTING PLAGUE if you use this area

- Avoid contact with wild animals; don't touch sick or dead animals
- Use flea control products on pets; prevent pets from roaming and hunting
- Take sick pets to a veterinarian
- Use insect repellent (DEET on skin or clothes, permethrin on clothes)
- **CONSULT A DOCTOR IMMEDIATELY IF YOU SUDDENLY BECOME ILL**
 - Symptoms of plague include fever, chills, headache, muscle pain, weakness, and sometimes buboes (tender and swollen lymph nodes in groin, armpit, or neck)
 - The earlier you see a doctor and get appropriate treatment, the better chance of recovery

For more information about plague, see www.cdc.gov/plague/.

Central District Health Department
Boise Office: 208-327-8625

Idaho Dept. of Fish and Game
Southwest Regional Office: 208-465-8465

State Offices are open 8:00 am – 5:00 pm Monday through Friday and closed on holidays.